



QUALITY SITE WELDING

CAPABILITY STATEMENT

Quality Site Welding and its staff have a broad range of capabilities to tackle any and all engineering tasks.

11 Endeavour Street, Warragul, VIC 3820

(03) 5623 1393

(03) 5623 4584

info@qsw.net.au

www.qualitysitewelding.com.au

QSW
QUALITY SITE WELDING

We love the Complex,
Difficult &
Challenging.

WELCOME

The more unique the construction challenge, the better our response.

Quality Site welding prides itself on collaboration with its clients to find solutions to complex construction projects specializing in mechanical, piping and structural manufacturing and installation.



ABOUT US

We deliver on time and on budget.

Quality Site Welding are specialist fabricators of pipework, structural and mechanical components.

Quality Site Welding also has core competencies in water systems and mining.



“

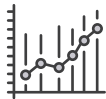
Quality Site Welding's origins are found in the spread of natural gas to regional towns. This involved crews digging trenches, laying and welding pipes, and connecting houses to the gas supply. This brought gas to Drouin, Warragul, Longwarry and Trafalgar. The original three partners started business in 1973 and were narrowed down to one when David Coade became the sole business owner. David diversified the business by expanding the work- shop and onsite capabilities. Key customers today range from mining, water and waste treatment, pump stations, to local businesses and the rural community. David developed a unique business known for its quality approach, well engineered solutions, a willingness to tackle difficult tasks and staff with a strong work ethic; this tradition continues today. Current Directors Bruce and Matt trained as apprentices under Dave in the late 90's and early 2000's and now continue with these traditions.

”



VISION

QSW wants to maintain a strong and sustainable business that offers ongoing opportunities to people in regional Victoria.



MISSION

QSW wants to provide a superior service to water, waste water infrastructure projects, mining and construction businesses whilst being an employer of choice for the West Gippsland Region.



VALUES

*Integrity
Reliability
Fun
Creativity
Innovative
Honesty*

MEET OUR TEAM

Matt Gray and Bruce Kerr are the Directors of Quality Site Welding. With a combined welding and project management experience of 48 years mostly working on quarry, mining, water treatment and waste water treatment projects nationally.

Matt and Bruce believe in providing regional Victorian's with the opportunity to work on large scale projects that they wouldn't have access to unless they were living and working for a metropolitan Melbourne business. They both have strong community foundations and love contributing to where they live.



DIRECTOR
MATT GRAY

Qualifications: Cert 3 in Engineering - Boilermaking
AS1796 Ticket 10 - Welding Supervisor
International Welding Specialist Diploma
Level 2 NACE International Coatings Inspector
Experience: Apprentice - Quality Site Welding
Senior Welding Inspector - WGPSN



DIRECTOR
BRUCE KERR

Qualifications:
Cert 3 - Engineering Fabrication
Diploma of Management
Experience: Apprentice - Quality Site Welding
Bruce has managed installation projects throughout Australia.

The harder the engineering challenge, the better our response.



PROJECT MANAGER
GLENN FRASSER

Qualifications:

Cert 3 - Engineering Fabrication

Cert 4 - Robotic Manufacturing

Cert 4 - Engineering Toolmaking

Experience: Jacobs E&C -SMP supervisor

Bluescope steel-operations
and maintenance

Wood Group PSN (Melbourne Water) LRC ME&C

Supervisor LRC Projects



PROJECT MANAGER
ADAM FEDDERSEN

Qualifications:

Cert 3 - Engineering Mechanical

Cert 4 - WPS - Workplace Safety

More than 20 years of industry experience
across manufacturing, production, quarry,
water and waste water treatment industries.

Leading hand and supervisory roles since
becoming qualified



DRAFTSMAN
ROB COLIGHTLY

Qualifications:

Certificate of proficiency, 1st class Sheet
metal

Diploma of Engineering Technology

Bachelor of Engineering Technology (Mech)



WORKSHOP MANAGER
GRANT TAYLOR

Qualifications:

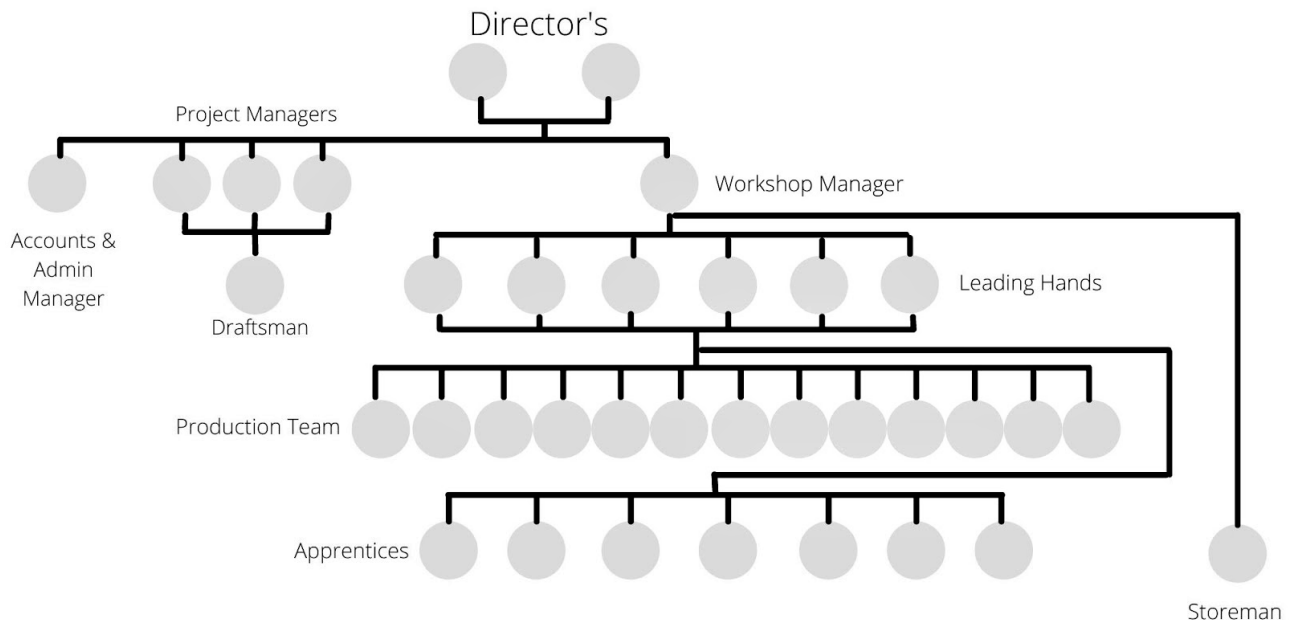
Cert 3 - First Class Metal Machining

Cert 4 - Competitive Manufacturing

Experience: Apprentice - SEC

Davies Way - Milking Plant Fabrication and
Installation

ORGANISATION STRUCTURE



What Sets us Apart

A complete one stop shop with the ability to manufacture and install structural mechanical and piping components. Experienced Project Management capable of coordinating projects from initial stages of the projects to completion and handover. Inhouse drafting capable of generating workshop detailed drawings and site installation and layout plan Well maintained Installation plant and equipment Ability to assist with design walkways, platforms, acces ways, pump stations and piping.

Compliance

- Manufacturing and installation works in accordance with Victorian Building Code
- Installation of structural steel in accordance with AS4100
- Manufacturing of structural steel in accordance with AS1554 - Part 1 - Part 6
- Manufacturing of pressure piping in accordance with AS4041
- Fixed walkways comply with AS1657
- Certified welding operators in accordance with AS3992

OHS

OH&S Standards in line with the Occupational Health and Safety Act 2004, Work Health and Safety Act 2011 (NSW) & (QLD), Work Health and Safety Act 2012 (Tas) & (SA), Work Health and Safety Act 2020

CAPABILITIES

At Quality Site Welding, we provide a wide range of Fabrication and Installation services, some of our capabilities are:

WELDING	WORKSHOP
<p>Mild Steel Mig Welding</p> <ul style="list-style-type: none"> • Stainless Steel "LSC" Pulse Mig Welding • AC & DC Pulse Tig Welding • Flux cored welding • Arc welding • Pressure pipe welding • Structural steel welding • Weld procedures and qualifications for both AS1554 & AS4041 	<ul style="list-style-type: none"> • Brake press • Plate rolling • Guillotine x 2400mm up to 10mm plates • General Machining • Pipe and tube bending
ONSITE	
<ul style="list-style-type: none"> • 24 hour break down work • Local and interstate work • Experienced Crane operators and Riggers • Heavy moving • Laser Shaft Aligning • Working at Heights • Confined spaces 	<ul style="list-style-type: none"> • 2D & 3D Drafting • Project management • General Mechanical fitting and Site Maintenance • • Ability to quickly Mobilize with <ul style="list-style-type: none"> o 20ft Mobile workshop containers. o 1 x 20t Franna Crane o 1 x 5t Telehandler

PAST PROJECT

SITE LOCATION

WESTERN TREATMENT PLANT - WERRIBEE

CLIENT: MELBOURNE WATER

CUSTOMER: CPBUGL JOINT VENTURE

PROJECT VALUE: \$3.6 MILLION

WHAT WE DID:

COMPLETE SMP INSTALLATION FOR A NEW 140 ML/D PROCESS TRAIN INCLUDING:

- 8x Blowers
- Dn1400 Stainless steel Aeration header
- Dn500 Stainless Steel Aeration distribution piping
- 4 x 88m Bioreactor/ Clarifier tanks including
- 45m Spiral blade Clarifier
- Clean water Launderers
- Bridge mounted Vertical Anoxic mixers
- Diffused Air Membranes 1056 Hydroflux AeroStrip Q4 Diffusers per tank
- Inlet feed and Ras Pumping stations



PAST PROJECT

SITE LOCATION

SHAKESPEARE GROVE ST KILDA MELBOURNE

CLIENT: MELBOURNE WATER

CUSTOMER: JOHN HOLLAND & KBR

PROJECT VALUE: \$800K

WHAT WE ARE DOING:

- Supply Manufacture and install Strucutral Platform
- Supply and Install Custom Polished Stainless steel Balustrade
- Coordination of Oversize transportation between QSW Manufacturing facility and St Kilda Beach
- Project Management of QSW Site labour, Subcontractors Plant and equipment



PAST PROJECT

SITE LOCATION

GALONG LIMESTONE STORAGE UPGRADE

CLIENT: GRAYMONT

PROJECT VALUE: \$1.1 MILLION

WHAT WE DID:

- Decommission load out plant from beechworth
- Complete modifications to structural steel
- Complete silo refurbishment
- Transport to galong
- Co-ordination of Oversize transport
- Install new silo configuration



PAST PROJECT

SITE LOCATION

BONEO WATER TREATMENT PLANT

CLIENT: JOHN HOLLAND SUEZ BECA JOINT

PROJECT VALUE: \$4.3 MILLION

WHAT WE ARE DID:

- Supply and installation of stainless-steel piping
- Installation of free issues mechanical equipment including
- Inlet band screens
- AWMA stopboard and penstock frames
- Gravity drainage decks
- Xylem UV disinfection units
- Aquadisk disk filter units
- MBBR diffuser grids with vibair diffusers
- Supply and installation of structural walkways, stairs and handrails
- Supply and installation of pipe supports
- Additional services supplied by QSW
- Full time site-based project management
- Dedicated 60T slewing crane and operator (dry hired)
- Dedicated 20T franna and operator (QSW owned)
- Dedicated 5T telehandler (QSW owned)



PAST PROJECT

SITE LOCATION

O'SHANNASSY RESERVOIR

CUSTOMER: JOHN HOLLAND KBR JV

PROJECT VALUE: \$1.5 MILLION

WHAT WE DID:

- Design, Fabrication and Installation of Dn1200 MSCL Fittings for mini Hydro power station
- Plan and develop procedures for removal and replacement of Valves contained within outlet tunnel
- Installation of inlet screen, Dn2100 MSCL pipeline.
- Fit out of intake shaft
- Installation of Dn1600 Outlet pipe and valve chamber



MAJOR CLIENTS



THANK YOU



Quality Site Welding
(03) 5623 1393
11 Endeavour Street, Warragul, VIC,